

PLASTER 2.0

RESPONSIBLE DESIGN • SUSTAINABLE BEAUTY



MI  **E** [®] *stone*

Sustainable Tile, Made in the USA

PLASTER 2.0

In response to the urgency of the climate crisis, Plaster 2.0 presents a necessary revolution within the industry. Plaster 2.0 is MILE[®]stone's first entirely carbon neutral product.

It is a beautiful concrete design paired with six bold hues that replicate the artistic layering of venetian plaster. This collection is available in various sizes, along with coordinating trim pieces that offers you conscious versatility.

It's time to take responsibility with the sustainable beauty of Plaster 2.0.



Wall
Venetian Crystal White 6"x24"
Venetian Clover 6"x24"

colors

	Ivory		Venetian Crystal White
	Silver Grey		Venetian Gold
	Sand		Venetian Clay
	Tortora		Venetian Red
	Espresso		Venetian Bay
	Midnight		Venetian Clover

A message from our CEO:

“With a commitment to becoming completely carbon neutral by 2030, MILE[®]stone introduces the industry’s first entirely carbon neutral porcelain tile collection: Plaster 2.0.

Our responsibility to design innovative quality products means a duty to not only our customers, but also our environment and community. In other words, as we focus on designing beautiful, cutting edge commercial and residential spaces, we must remain mindful as we contribute to our communities and natural ecosystems.

Climate change is demanding we take conscious steps that contribute to this generation and generations to come. Sustainability is not just a buzz word, but an action.

It’s time to take responsibility.”



Rodolfo Panisi, CEO of Florim USA, Inc.





It's time to take responsibility.

COLORS & SIZES

(Sizes listed are nominal)

IVORY



Color
Body



Carbon
Neutral

- 1102930** - 12"x24" Rectified
- 1102912** - 16"x32" Rectified
- 1102949** - 32"x32" Rectified
- 1102955** - 2"x2" Mosaic
- 1102961** - 3"x12" Bullnose
- 1102967** - 6"x12" Cove Base

SILVER GREY



Color
Body



Carbon
Neutral

- 1102931** - 12"x24" Rectified
- 1102913** - 16"x32" Rectified
- 1102950** - 32"x32" Rectified
- 1102956** - 2"x2" Mosaic
- 1102962** - 3"x12" Bullnose
- 1102968** - 6"x12" Cove Base

SAND



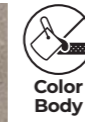
Color
Body



Carbon
Neutral

- 1102932** - 12"x24" Rectified
- 1102914** - 16"x32" Rectified
- 1102951** - 32"x32" Rectified
- 1102957** - 2"x2" Mosaic
- 1102963** - 3"x12" Bullnose
- 1102969** - 6"x12" Cove Base

TORTORA



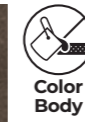
Color
Body



Carbon
Neutral

- 1102933** - 12"x24" Rectified
- 1102915** - 16"x32" Rectified
- 1102952** - 32"x32" Rectified
- 1102958** - 2"x2" Mosaic
- 1102964** - 3"x12" Bullnose
- 1102970** - 6"x12" Cove Base

ESPRESSO



Color
Body



Carbon
Neutral

- 1102934** - 12"x24" Rectified
- 1102916** - 16"x32" Rectified
- 1102953** - 32"x32" Rectified
- 1102959** - 2"x2" Mosaic
- 1102965** - 3"x12" Bullnose
- 1102971** - 6"x12" Cove Base

MIDNIGHT



Color
Body



Carbon
Neutral

- 1102935** - 12"x24" Rectified
- 1102917** - 16"x32" Rectified
- 1102954** - 32"x32" Rectified
- 1102960** - 2"x2" Mosaic
- 1102966** - 3"x12" Bullnose
- 1102972** - 6"x12" Cove Base



6" x 24"

2" x 2"
mosaic

16" x 32"

32" x 32"

12" x 24"

COLORS & SIZES (Sizes listed are nominal)

10

VENETIAN CRYSTAL WHITE



1102983 - 6"x24"



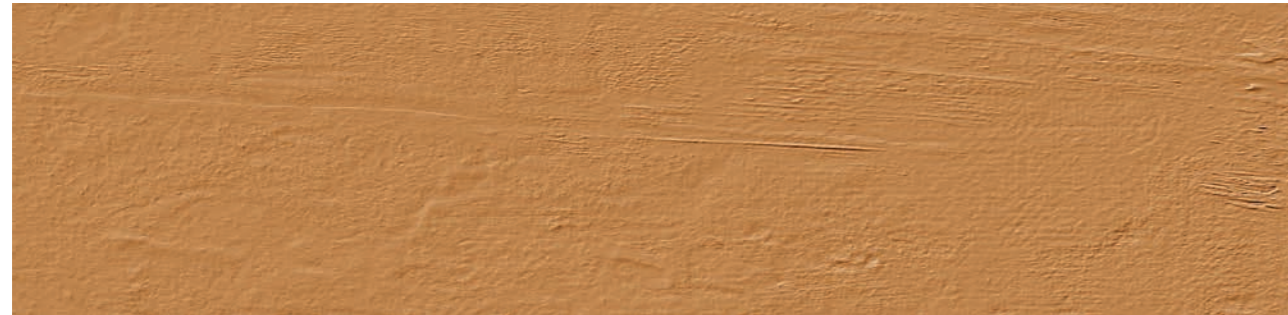
VENETIAN GOLD



1102980 - 6"x24"



VENETIAN CLAY



1102981 - 6"x24"



11

VENETIAN RED



1102979 - 6"x24"



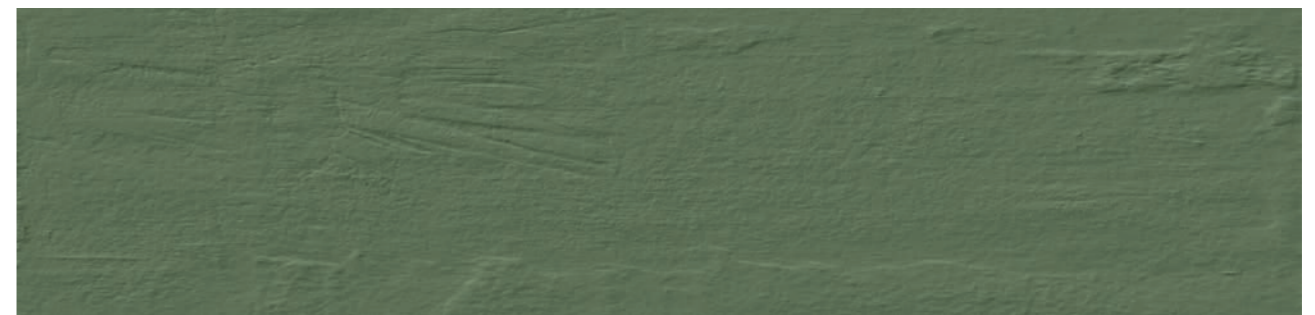
VENETIAN BAY



1102982 - 6"x24"



VENETIAN CLOVER



1102984 - 6"x24"



YOUR SPACE REDEFINED



Wall
Venetian Gold 6"x24"

Floor
Midnight 32"x32"

Wall
Venetian Red 6"x24"

Floor
Tortora 32"x32"

Wall
Venetian Bay 6"x24"

Floor
Silvergrey 32"x32"

Wall
Venetian Clover 6"x24"

Floor
Ivory 32"x32"



Wall
Venetian Red 6"x24"

Floor
Ivory 12"x24"

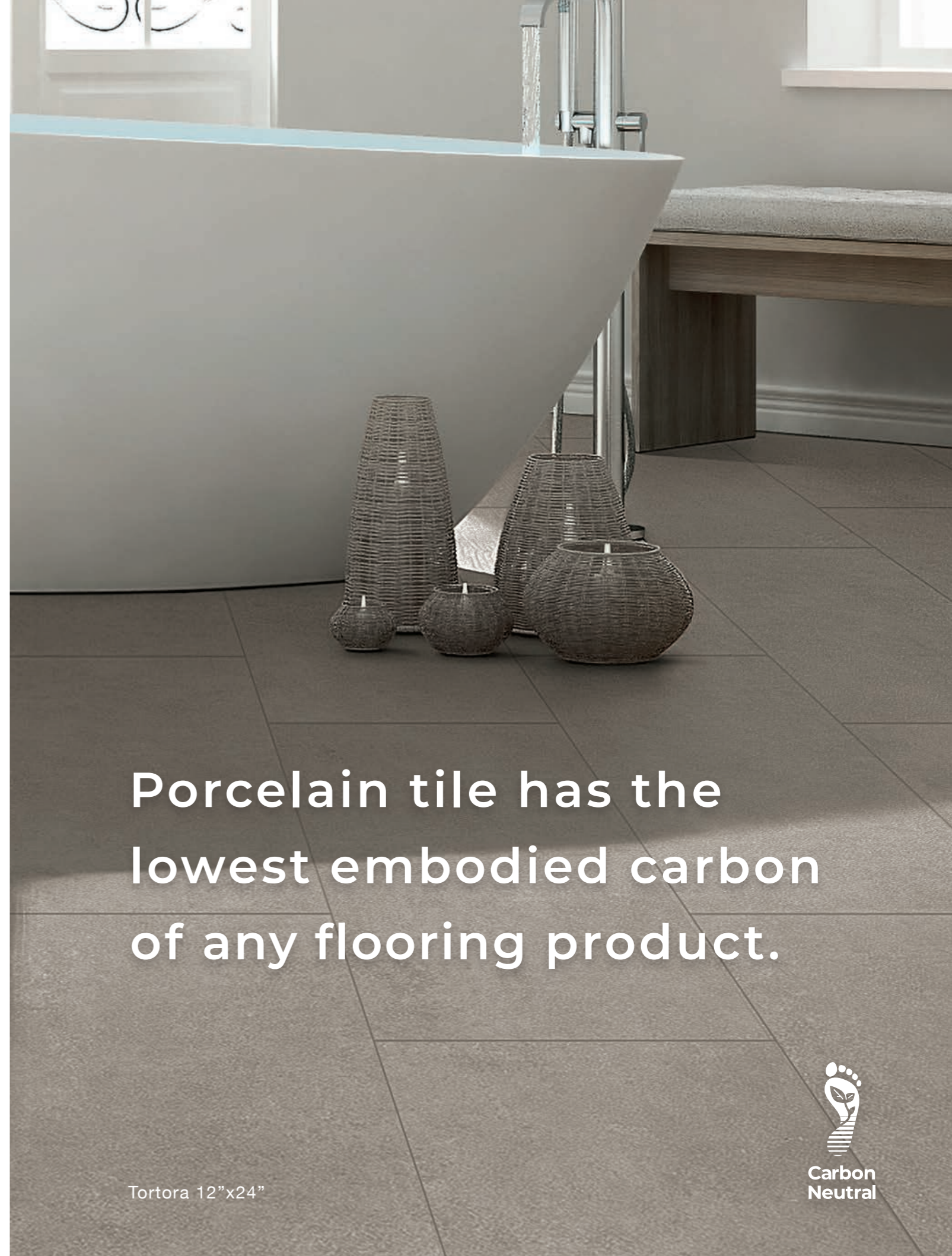
Plaster 2.0 is
MILE[®]stone's
first entirely
carbon neutral
product to be
offered in the
porcelain
tile industry.



Carbon
Neutral



Sand 16"x32" + 32"x32"
Tortora 32"x32"
Espresso 32"x32"



Porcelain tile has the lowest embodied carbon of any flooring product.

Tortora 12"x24"



ESPRESSO	2.00	2.40	ESPRESSO	2.00	2.40	SOTTORINAS	1.20
AMERICANO	2.00	2.40	MACIAC	1.80	2.20	WASSER LAUT 0.1	1.20
CAPPUCCINO	2.00	2.40	MACIAC M	1.80	2.20	APFEL SCHOKLE 0.1	2.20
ESPRESSO MACCHIATO	2.00	2.40	CHA LATTE	2.20		LEMONAID 0.1	2.20
LATTE	2.40		COFFA SAHNE	2.20		CHARTEA 0.1	1.20
PLATTE	1.20		COFFA SHOT	2.20		COFFA SCHLACHT	1.20
MILCHKAFFEE	1.80		COFFA (30%)	2.00		BEUTZ (GLAS)	1.20
ESPRESSO	1.00		HOT CHOCOLATE	2.00		PETER PAN 0.1	1.20

COFFEE



Bar
Venetian Clay 6"x24"

Floor
Espresso 32"x32"





To lower our carbon emissions, over 95% of the raw materials used in the production of MILE®*stone* tiles are sourced within a 500-mile radius of the Clarksville, TN factory.



Wall
Venetian All Colors 6"x24"

Floor
Tortora 32"x32"



Let's go
TOGETHER



like SALT & PEPPER

Café

- ESPRESSO•
- Latte•
- Cappuccino•
- AMERICANO•

Shopping list

- cheese
- milk
- bread
- yoghurt
- dips
- lemon
- wine
- banana
- olive
- meat



Wall
Venetian Bay 6"x24"

Floor
Ivory 32"x32"



MILE[®]stone offers products containing up to 60% recycled content, lends to LEED & WELL certifications, and does not contribute to the negative impact of VOC's in building materials.



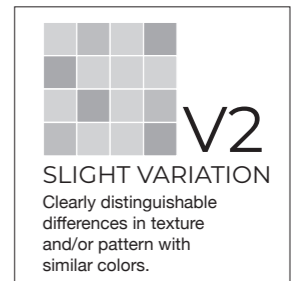
SIZES & COLORS

color body 

Colors	12" x 24" rectified	16" x 32" rectified	32" x 32" rectified	12"X12" mosaic	3"x12" bullnose	6"x12" cove base
IVORY	1102930	1102912	1102949	1102955	1102961	1102967
SILVER GREY	1102931	1102913	1102950	1102956	1102962	1102968
SAND	1102932	1102914	1102951	1102957	1102963	1102969
TORTORA	1102933	1102915	1102952	1102958	1102964	1102970
ESPRESSO	1102934	1102916	1102953	1102959	1102965	1102971
MIDNIGHT	1102935	1102917	1102954	1102960	1102966	1102972



Colors	6" x 24"
VENETIAN WHITE CRYSTAL	1102983
VENETIAN GOLD	1102980
VENETIAN CLAY	1102981
VENETIAN RED	1102979
VENETIAN BAY	1102982
VENETIAN CLOVER	1102984



Colors shown may vary from actual product.
 Final selection should be made from actual product samples.
 Note: Sizes listed are nominal.

Technical Specifications

This product meets or exceeds all standards described in ANSI A137.1 & A137.3.
 Este producto cumple o excede todos los estandares de ANSI A137.1 & A137.3.

30

SPECS	TEST METHOD	INDUSTRY STANDARD	MILE [®] stone VALUES	
 WATER ABSORPTION	ASTM C373	≤0.5%	≤0.5%	
 SURFACE WEAR RESISTANCE	ANSI A137.1	Surface Wear-resistance properties of glazed vitreous and porcelain tiles.	ALL RESIDENTIAL / COMMERCIAL	
 CHEMICAL RESISTANCE	ASTM C650	A tile sample is placed in continuous contact with a variety of chemicals for 24 hours. Sample must show no visible defects.	NOT AFFECTED	
 D.C.O.F. AcuTest [®]	ANSI A326.3	INDOOR ≥0.42 WET	≥0.42 WET	
		OUTDOOR >0.55 WET	>0.55 WET 2CM & GRIP	
 STAIN RESISTANCE	ASTM C1378	Surfaces are exposed to staining agents for 24 hours followed by four cleaning procedures. Results are recorded post cleaning.	NOT AFFECTED	
 BREAKING STRENGTH	BREAKING STRENGTH GAUGED PORCELAIN	ASTM C1505	≥175 lbf	≥200 lbf
	BREAKING STRENGTH	ASTM C648	≥275 lbf	≥300 lbf
	BREAKING STRENGTH OUTDOOR 2CM	ASTM 1505	2000 lbf (10.9 kN)	≥2500 lbf
 RESISTANCE TO FREEZE	ASTM C1026	A tile sample is subjected to repeated processes of freezing and thawing. Sample must show no visible defects.	RESISTANT	
 WARPAGE EDGE	ASTM C485	±0.40% or ±0.05 in (±1.8 mm)	± 0.40%	Rectified
 WARPAGE DIAGONAL	ASTM C485	±0.40% or ±0.07 in (±1.8 mm)	± 0.40%	Rectified
 WEDGING	ASTM C502	±0.25% or ±0.03 in (±0.8 mm)	± 0.25%	Rectified
 WARPAGE EDGE	ASTM C485	±0.50% or ±0.07 in (±1.8 mm)	± 0.50%	Calibrated
 WARPAGE DIAGONAL	ASTM C485	±0.50% or ±0.07 in (±1.8 mm)	± 0.50%	Calibrated
 WEDGING	ASTM C502	±0.50% or ±0.08 in (±2.0 mm)	± 0.50%	Calibrated
 THICKNESS	ASTM C499	Range: ± 0.04 in	≤0.04 in	

• Due to the inherent nature of fired porcelain tile, it is important to note that the coefficient of friction may vary within and between product runs.

Green Memberships & Accreditations

31

	DESCRIPTION
	Declare labels disclose all intentionally added ingredients and residuals present in the final product. Being Red List Free means the worst materials, chemicals, and elements for human and environmental health are not present within our products.
	The Health Product Declaration Collaborative transparency declaration for all of Florim USA's naturally occurring materials.
	Certification of plant and product specific Environmental Product Declaration (EPD) which tracks environmental impacts from the production of porcelain tile.
	Tile Council of North America and the American National Standards Institute's standard for sustainability and environmental impact.
	Underwriter's Laboratories certification of low emitting materials. Florim USA is Green Guard Gold certified.
	Defines post-consumer content of as much as 3% recycled material which reduces landfill impact. Certified by Bureau Veritas.
	Defines pre-consumer content of as much as 45% recycled material which reduces our carbon footprint. Certified by Bureau Veritas.
	Florim USA's sustainability and social practices support the mission of The International Living Future Institute which strives to create a socially just, culturally rich, and ecologically restorative community.
	USGBC is committed to suit a more sustainable life. Florim USA supports this mission by manufacturing products which aid architects in achieving USGBC certification.
	Florim USA sources >95% raw material within a 500 mile radius, which results in a smaller carbon footprint.
	Florim USA actively participates in the Tile Council of North America which allows us to be on the forefront of advances in the tile industry and its standards.
	The Tennessee Recycling Coalition is dedicated to promoting recycling and sustainable material management practices, and awarded Florim USA the Tennessee Recycler of the Year award for 2020.
	ISO 9001 & ISO 14001 are globally recognized standards. ISO 9001 certifies that Florim USA products and practices continually meet and exceed customer and regulatory requirements. ISO 14001 certifies that Florim USA complies with environmental regulations and that its manufacturing practices are environmentally conscious.
	Florim USA updated its corporate charter in 2022 to become a Benefit Corporation. Our company is committed to maintaining this designation through initiatives focused on sustainability, social responsibility, ethical business practices and transparent, annual reporting on our social and environmental performance.

Cleaning & Maintenance / Routine Care Instructions



Scan the QR code with your smartphone.

PROGRESS THAT INVESTS IN THE ENTIRE SOCIETY

As an active member of the U.S Green Building Council, MILE[®]stone spreads awareness to the community and encourages the use of building solutions through environmentally friendly practices. Our products positively contribute to the requirements for obtaining the LEED (Leadership in Energy and Environmental Design) and WELL (IWBI) certifications.

A COMMITMENT TO ENVIRONMENTAL SUSTAINABILITY AND RESPONSIBILITY

We are committed to conscious development that minimizes the negative impact of manufacturing production on the environment. Our general approach to sustainability intersects with our business strategy to embrace three areas of responsibility: economic, social, and environmental. Some ways we prove this are:

- Products containing as much as 45% recycled content.
- Post-consumer recycled content levels as much as 3%.
- Zero industrial wastewater discharge.
- A 99% internal process recycling rate.
- Local sourcing of >95% raw materials (within 500-mile radius of factory) resulting in low transportation related carbon emissions.

MILE[®]stone is taking these and other steps, as well as actively investing to reduce carbon emissions to ensure that we reach full carbon neutrality.



MADE IN THE USA



300 International Blvd. Clarksville, TN 37040 | www.milestonetiles.com | 1-877-356-7461



Sustainable Tile, Made in the USA